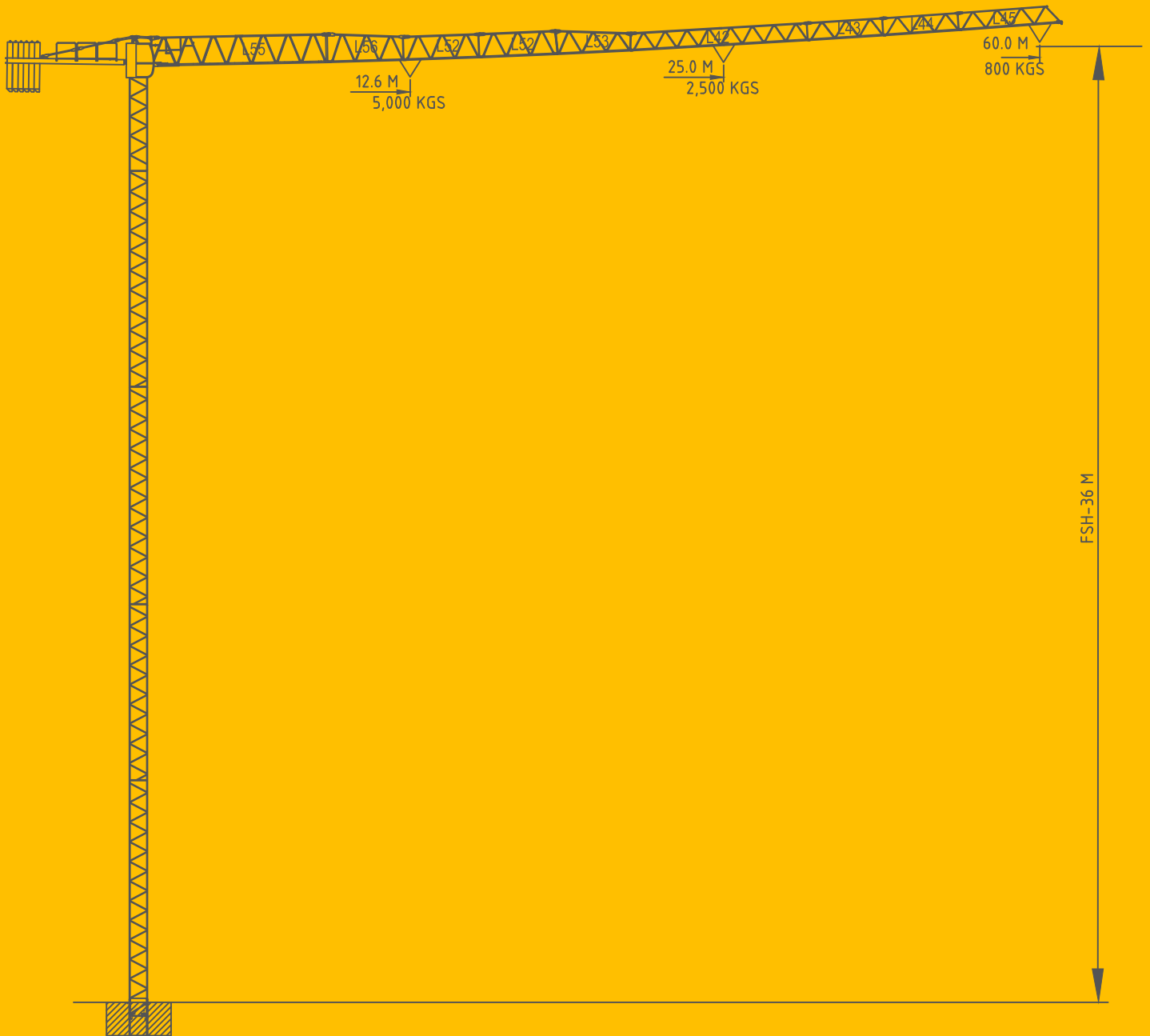


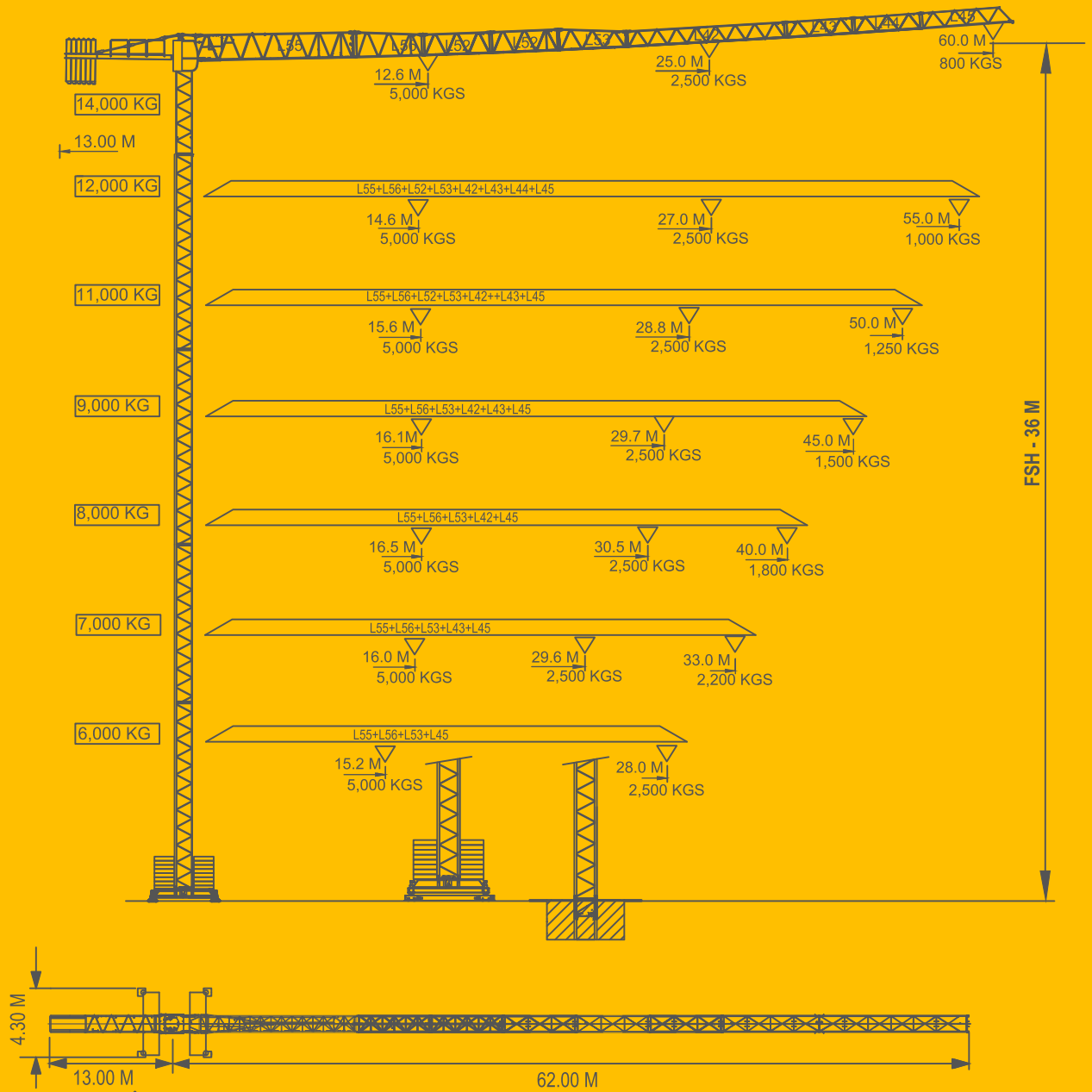


SGT 6008 TL



FIXED TOWER CRANE SGT 6008 TL

SGT 6008 TL

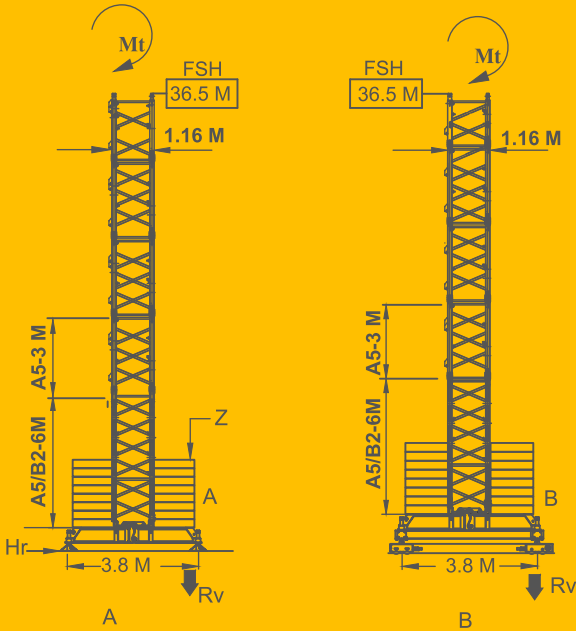


Icon	Diagram	Capacity (KG/M)	Capacity (KGS)	M	M											
					13	18	23	28	33	40	45	50	55	60		
14000 KG 7X2000 KG	60 M	L55+L56+L52+L52+L53 L42+L43+L44+L45	5000	25.0 M	2500	2500	2500	2382	1906	1524	1307	1120	1000	800		
			2500	12.6 M	4652	3722	2977	2382	1906	1524	1307	1120	1000	800		
12000 KG 6X2000 KG	55 M	L55+L56+L52+L53 L42+L43+L44+L45	5000	27.0 M	2500	2500	2500	2400	1970	1540	1320	1150	1000			
			2500	14.6 M	5000	3980	3020	2400	1970	1540	1320	1150	1000			
11000 KG 5X2000+1X1000 KG	50 M	L55+L56+L52+L53 L42+L43+L45	5000	28.8 M	2500	2500	2500	2500	2130	1670	1440	1250				
			2500	15.6 M	5000	4270	3340	2590	2130	1670	1440	1250				
9000 KG 4X2000+1X1000 KG	45 M	L55+L56+L53+L42 +L43+L45	5000	29.7 M	2500	2500	2500	2500	2210	1710	1500					
			2500	16.1 M	5000	4420	3360	2680	2210	1740	1500					
8000 KG 4X2000 KG	40 M	L55+L56+L53+L42 +L45	5000	30.5 M	2500	2500	2500	2500	2280	1800						
			2500	16.5 M	5000	4550	3460	2760	2280	1800						
7000 KG 3X2000+1X1000 KG	33 M	L55+L56+L53+L43 +L45	5000	29.6 M	2500	2500	2500	2500	2200							
			2500	16.0 M	5000	4540	3450	2760	2200							
6000 KG 3X2000 KG	28 M	L55+L56+L53+L45	5000	28.0 M	2500	2500	2500	2500								
			2500	15.2 M	5000	4180	3170	2500								

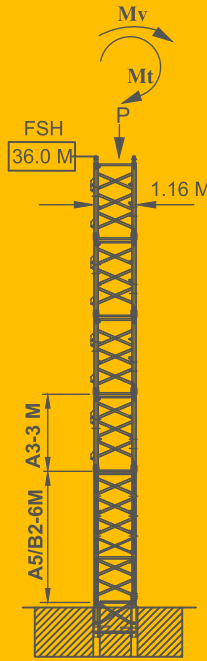
SGT 6008 TL

EXTERNAL CLIMBING ARRANGEMENT

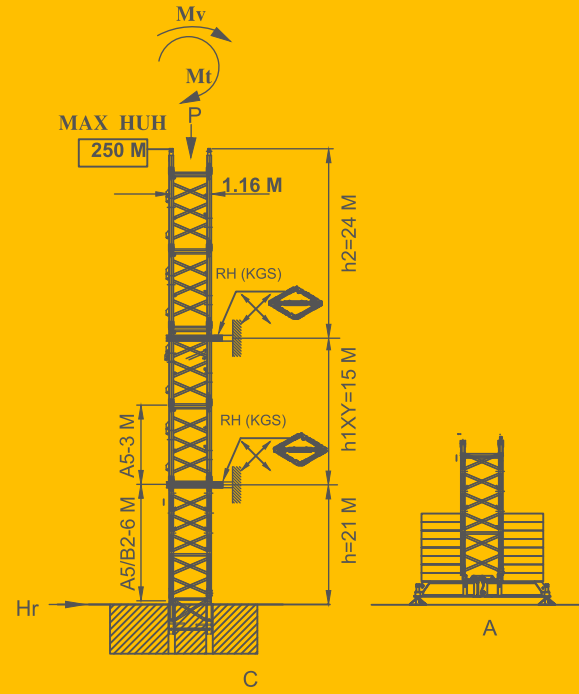
FREE STANDING HEIGHT-FSH



FREE STANDING HEIGHT-FSH



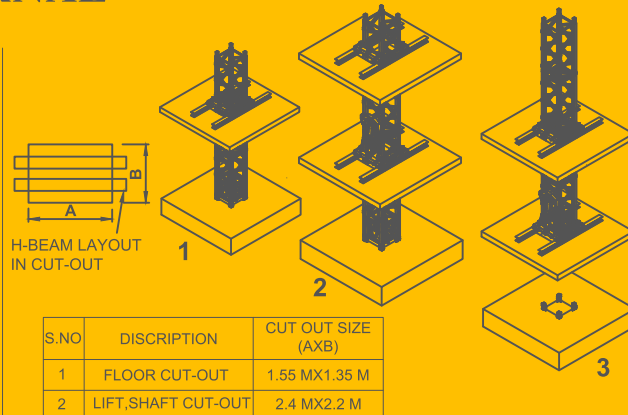
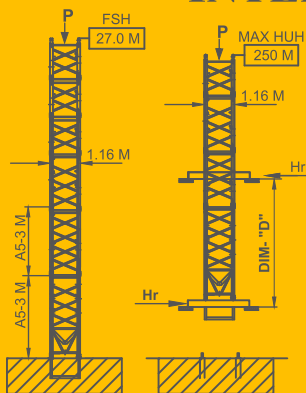
MAX HUH WITH ANCHOR



S.NO.	REACTION	SYMBOL	UNIT	DATA FOR A & B (F.S.H.)		DATA FOR C (F.S.H.)	
				IN SERVICE	OUT OF SERVICE	IN SERVICE	OUT OF SERVICE
1	VERT. REACTION	P	KGS	—	—	42,296	43,475
2	HOR. REACTION	Hr	KGS	4,314	7,441	4,314	7,441
3	SLEW MOMENT	Mt	KG-M	6,830	—	6,830	—
4	MOMENT	Mv	KG-M	—	—	1,21,265	1,39,628
5	MAX. VERT. REACTION-EACH PAD	Rv	KGS	49,031	52,190	—	—
6	BASE C/W	Z	KGS	61,162	61,162	—	—
7	TIE FORCE (HUH)FOR (A&B)	Rh	KGS	—	—	10,601	12,742

REMARKS : DATA FOR MAXIMUM JIB LENGTH & MAXIMUM F.S.H

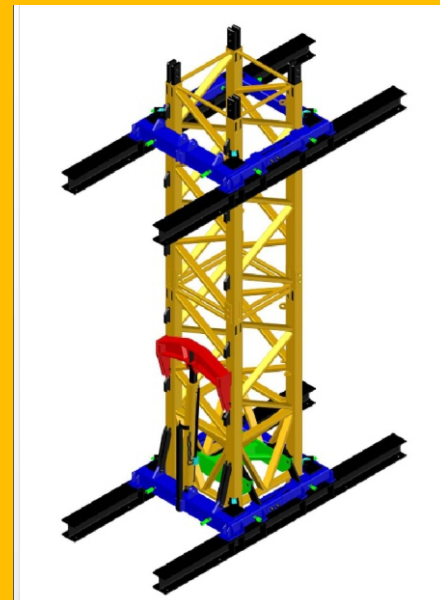
INTERNAL CLIMBING ARRANGEMENT














S.NO.	DISCRIPTION	CUT OUT SIZE (AXB)
1	FLOOR CUT-OUT	1.55 MX1.35 M
2	LIFT,SHAFT CUT-OUT	2.4 MX2.2 M

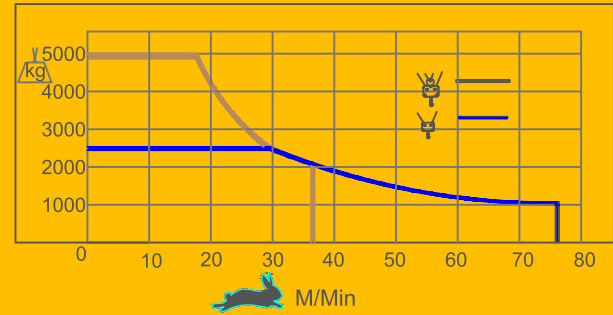
S.NO.	REACTION	SYMBOL	IN SERVICE	UNIT	OUT OF SERVICE	DIM "D"-M
1	VERT. REACTION	P	37,256	KGS	42,845	5.5 M. (MIN.)
2	HOR. REACTION	Hr	19,062	KGS	23,828	8.5 M. (STD)
3	VERT. REACTION	P	37,256	KGS	42,845	
4	HOR. REACTION	Hr	12,334	KGS	23,828	






REMARKS : PLEASE CONSULT ALPHA FOR F.S.H.>27 M & OTHER SPACING DIM. "D".

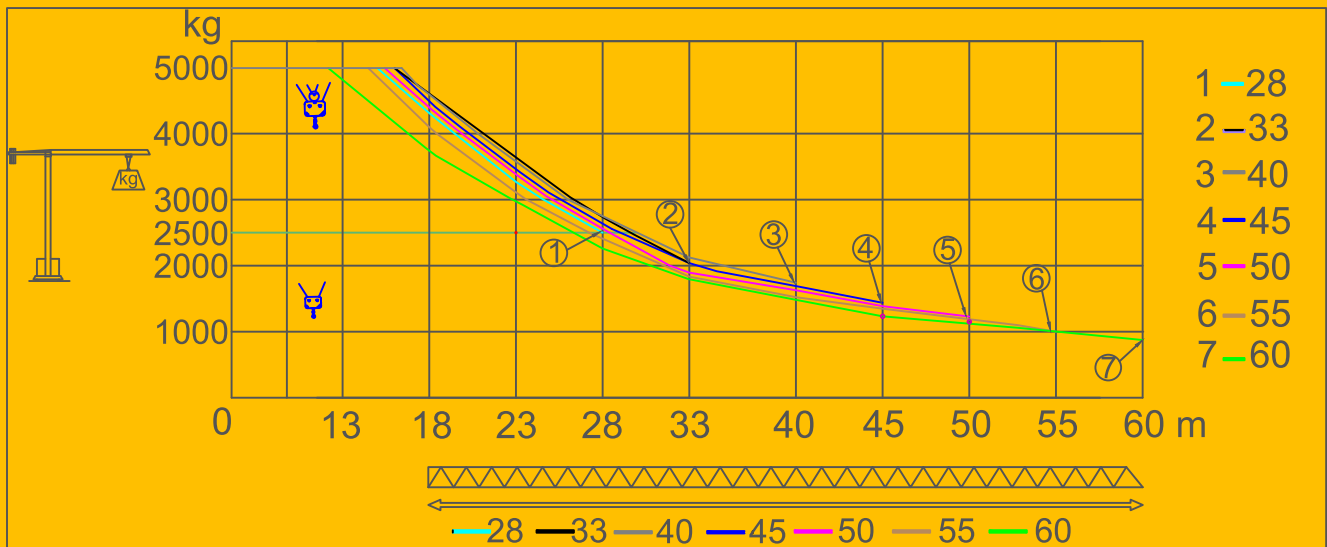


POWER-SUPPLY	HOIST WINCH	THREE -PHASE SUPPLY
30 KVA	ASW 15/1	380V-50Hz

HOIST WINCH	SYMBOL	FALL				POWER SUPPLY
STD-ASW 15/1			0-76 M/Min 0-38 M/Min	15.0 KW	STD HUH-81 M	30 KVA
OPTION- ASW15/2			0-76 M/Min 0-38 M/Min	15.0 KW	MAX HUH-125 M	30 KVA
OPTION- ASW18/3			0-82 M/Min 0-41 M/Min	18.5 KW	MAX HUH-170 M	37 KVA
OPTION- ASW22/4			0-98 M/Min 0-49 M/Min	22.0 KW	MAX HUH-250 M	45 KVA



MECHANISM	SYMBOL		
TROLLEY		0-60 M / MIN	3.0 KW
SLEWING		0-1 RPM	2X3.7 KW
TRAVELLING		0-15 M / MIN	2X3 KW



OPTIONAL FITMENT: SAFE LOAD INDICATOR (SLI) , DISPLAY UNIT IN CABIN , ANTI COLLISION DEVICE , ANEMOMETR , WIRE LESS REMOTE CONTOL OPERATION.

REMARKS: ALPHA RESERVES THE RIGHT TO ALTER THE SPECIFICATIONS WITHOUT PRIOR INTIMATION. WEIGHT,DIMENSIONS & CAPACTIES MENTIONED HERE IN ARE VARIABLE WITH IN +/-5%. ACCESSORIES , IF ANY SHOWN HERE IN , ARE NOT PART OF STANDARD EQUIPMENT.



CANGRAFT

Auth. Dealer

CANGRAFT EQUIPMENT PRIVATE LIMITED

Office No.16, Wing C, Roshan One, Chakan M.I.D.C

Phase-II Near Podar International School

Varale, Pune-410501

Mobile : +91-8800239853, +91-8800495428

Email : info@cangraftequipment.com

01/11/2022

HEAD OFFICE

Plot No-122,Industrial Area,
Phase-IV,Udyog Vihar
Gurugram, Haryana Pin-122015
Phone : 011-26302647,26302517,26302434
E-mail : alpha@alphaservices.co.in
Website : www.alphaservices.co.in

PLANT1

F-84-85,85a & 59A , RIICO Industrial Area
Bhiwadi,Distt.Alwar,Rajsthan-301019
Phone : 01493-221873
E-mail : alpha1@alphaservices.co.in
Website : www.alphaservices.co.in